



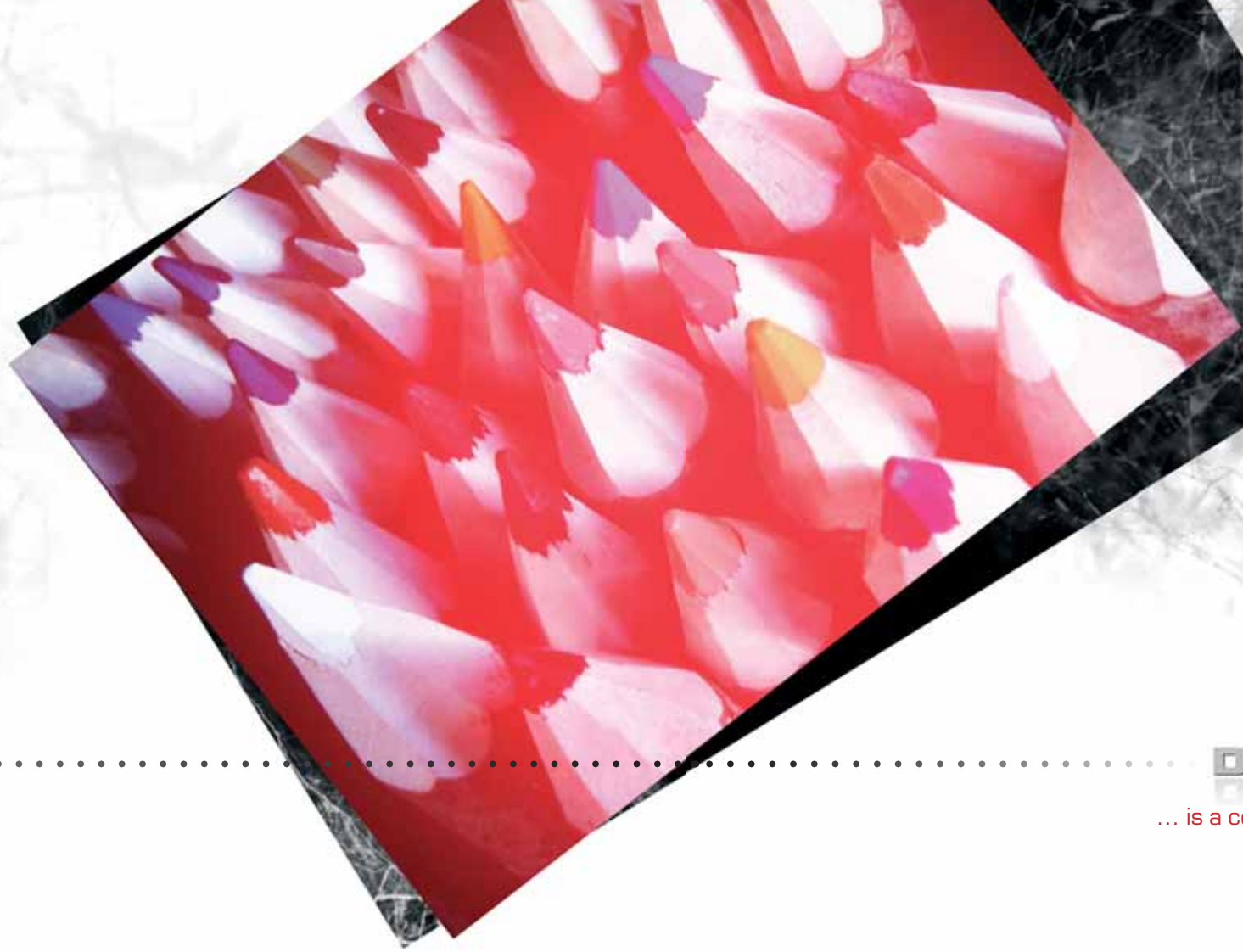
**DigitalSpot 3000 DT™**

**ROBE®**

## DigitalSpot 3000 DT™

is the first  
**Digital Moving Light**  
on the market worldwide  
offering the dual functionality  
of **digital projection** and **LED-based Wash Light**.  
with a **Digital Moving Light Projector**.

A **unique fusion of technologies** plus numerous  
innovative functions delivers a highly flexible product  
suitable for virtually all market segments.  
The **DigitalSpot 3000 DT**'s impressive price-to-features  
ratio makes digital technology more  
affordable than ever.



## DigitalSpot 3000 DT™

... is a compact Digital Moving Light offering stunning new possibilities,  
never seen before in moving lights.

## DigitalSpot 3000 DT

is based on **digiLED** technology  
- a unique combination  
of DLP and LED technologies  
in one fixture.



**DigiLED Technology**

Integrated  
**LED Module**  
including  
48 x Luxeon  
**Rebel RGB+W LEDs.**

The fixture  
emits **3.000 ANSI lumens**  
from a single **200W**  
projection lamp  
with an awesome contrast ratio  
of **2,500:1.**

The result is a perfect combination  
of **amazing digital gobo effects**  
and the projection  
of **highly saturated colours**  
provided by a single lighting fixture.







Images, Gobos and Videos are digitally produced and handled.

DigitalSpot 3000 DT features a full-sized high-end graphical computer – the embedded DigitalSpot 3000 DT Media Server Engine.

The DigitalSpot 3000 DT Media Server supports **MPEG1** and **MPEG2** video file formats as well as all common image files, like **JPG, BMP, PNG, TGA, GIF, PCX, PNM, XPM** and **LBM**.

**240** media folders are available for factory content and own customized media content. Each folder consists of **255** media files.

**DigiGobo, DigiMovie**



## Single Projection



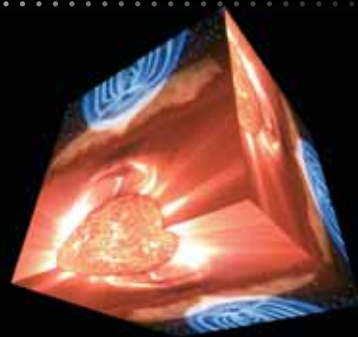
Using DigitalSpot 3000 DT's powerful **picture merging** function, the output of up to 64 sources/fixtures can be merged together, creating **one large picture** or **movie**.

## Picture Merging



**Arrays** of a maximum of 64 fixtures are achievable in any possible configuration i.e. 1x2, 2x2, 2x3, 3x4, 4x4, 5x4, 6x3, 6x4, 8x2, 8x4, 8x8, 10x4, 12x4...



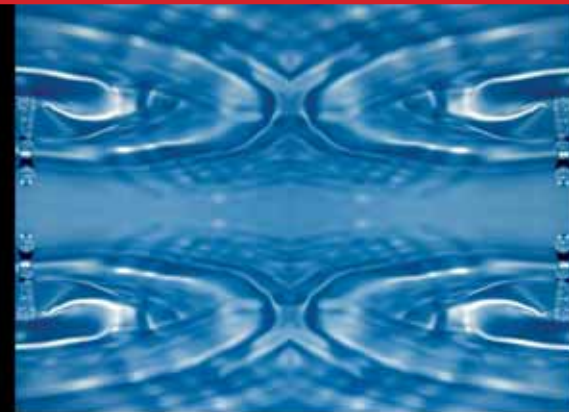


## DigiEffects



The **DigitalSpot 3000 DT** offers hundreds of onboard effects.

Multiple effects can be combined together and applied to each layer.



**Popular effects** include

tile,  
mirror,  
rotate,  
zoom,  
**3D**  
and many more.

The **Kaleidoscopic effects** allow the user to generate many new and appealing graphical effects from the current content. There are two modes for Kaleidoscopic effects - Static mode and Dynamic mode, which changes the image dynamically according to the preselected parameters.



## Kaleidoscope

**Colour Modifying** has never been easier! By applying colour filters, RGB conversions, colour keying and masking effects one can achieve quick and powerful colour transformations.



## Colour Modifying





## DigiMirroring

**New mirroring mode** for picture merging allows **connecting more than 64 fixtures**, thus allowing **large area projection** with **full resolution** per fixture on the whole surface.



**DigitalSpot 3000 DT** allows you to combine and work with **3 independent and individual Gobo Layers**.

Transparency levels are proportionally adjustable.

Various Layer Modes, like Additive Mode, Subtractive Mode, Multiplicative Mode and Copy Mode specify how media and layers can be **combined** with **each other**.

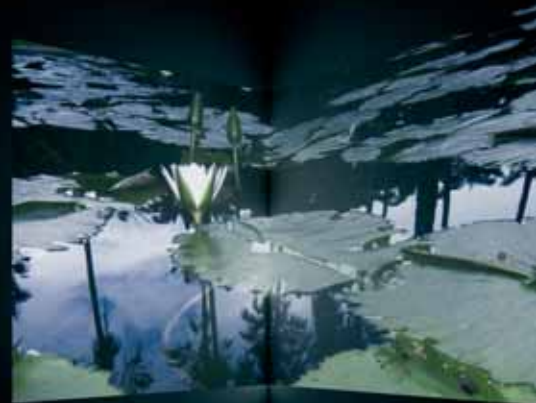
## DigiLayer





**DigiCorners** and curved surfaces can be neatly filled with **projected images** in both **portrait** and **landscape** orientations.

**DigitalSpot 3000 DT** offers all parameter controls for achieving the required results **quickly and successfully**.

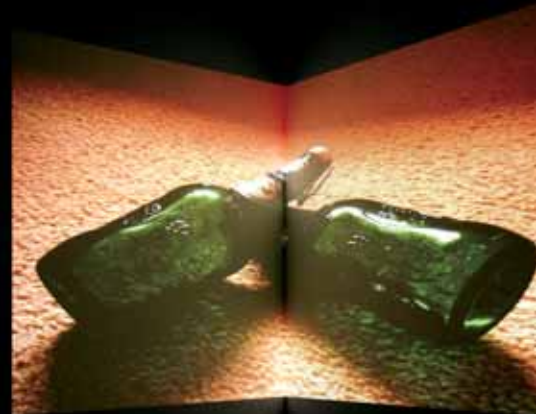


## DigiWarp

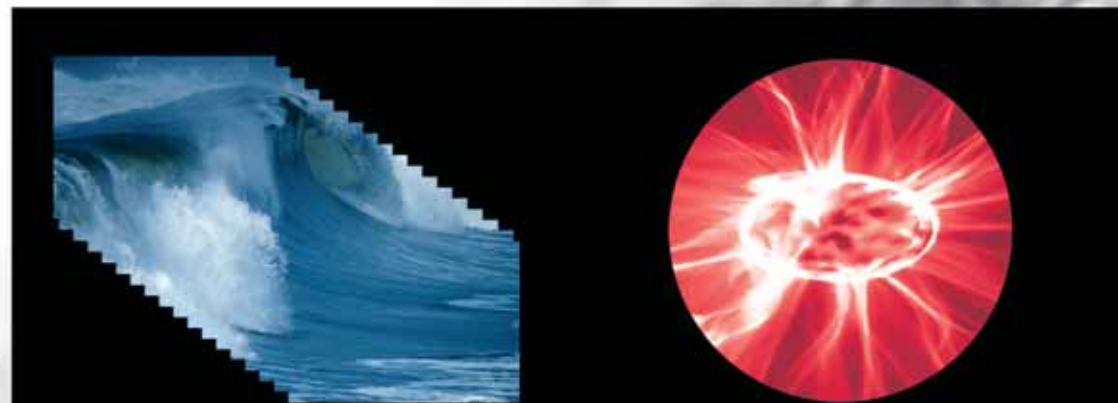
**3D objects** e.g. **spheres**, **cylinders** can be completely covered with projected images using this **dynamic function**.

Single or multiple fixtures can be used to achieve this effect.

**DigiWarp** functions are quickly achievable due to its **4 channel parameter layout**.



**Digilris** is a flexible masking tool that **changes the shape** of the image or video. Iris effects can be applied on global layer and can also be covered by media content.



Over **150 different** **Digilris** effects and masks are available.







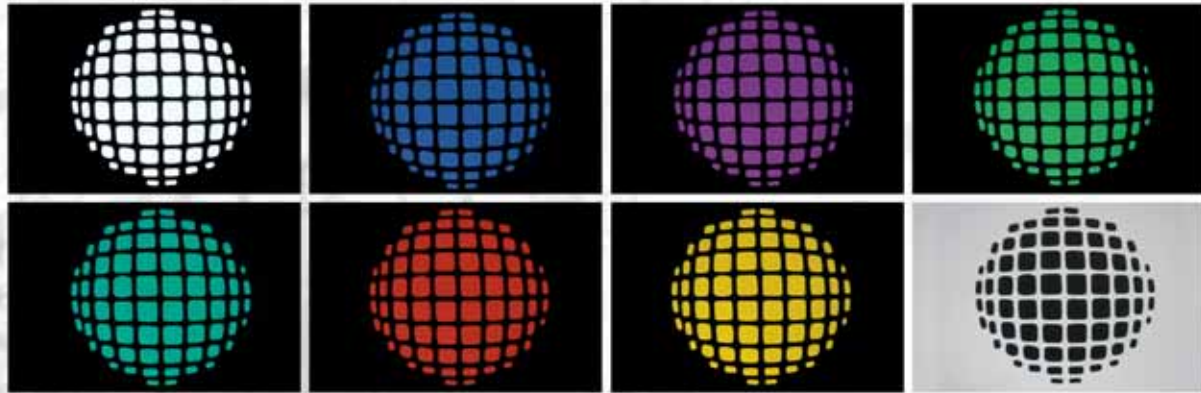
## DigiKeystoning

DigitalSpot 3000 DT provides a **full set of keystone parameters**. Picture distortions created by extreme projection angles between the screen and lighting fixture are corrected by individually adjusting the four corners of the projected image in x and y directions. The keystone ratios in x and y direction are also adjustable, while the image keeps its original aspect ratio. Keystoning is always used in the DigiMerge function when soft-edging several images together to make one large one.

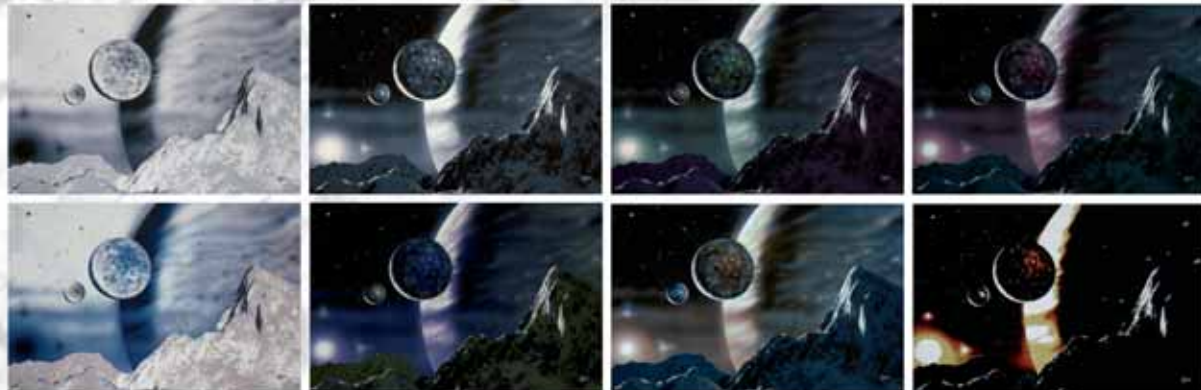


## DigiFraming

**Framing Controls** are also known as Shutter Blades. The DigitalSpot 3000 DT has **4 individually controllable "Banner Blades"**, allowing the image to be masked in any configuration. This function is a common feature of any conventional theatrical profile spot fixture. The depth and angle of each of the 4 Banner Blades is adjustable. The whole Banner Blade system can be rotated - very helpful when a set piece or specific area needs illuminating with one image alone.



## DigiColours



**DigitalSpot 3000 DT** provides you with great possibilities of **colour adjustments and modifications**.

Each of the 3 gobo layers offer parameters for individual media colour corrections.

A separate **CTC** (Colour Temperature Correction) Channel allows the media's colour temperatures to be adjusted on the fly.

Its separate **LED Wash Module** adds colour washes to your projected media with ideally matching intensity levels.

**RGB + W** modifiers allow for thousands of attractive and selectable colour wash tones.



## DigiLEDColours







## Control, Inputs and Captures

**DigitalSpot 3000 DT** offers many features and functions that are remotely controllable via several interfaces - **DMX512** or **ArtNet protocol** offer control via up to 136 channels. Remote Device Management (RDM) for automatized remote configuration is supported. Web based interface provides Media Content Management, Fixture Synchronization or Live Preview. FTP and USB2 interface allow content upload.

Content signal can also be received from external sources including cameras and computers. S-Video and Composite signals can either be sent directly to the dataprojector or can be routed to the internal Media Server Engine where the signal is processed and used in effects and transformations.

**DigitalSpot 3000 DT is easy and user friendly to program.** DigitalSpot 3000 DT works with DMX 512 protocol and TCP/IP protocols as ArtNet, FTP, HTTP and others. RDM (Remote Device Management) bidirectional communication protocol is also supported. DigitalSpot 3000 DTs will soon be compatible with MA-NET1 and MA-NET2 control protocols.

### DMX Communication

Standard 3 pin and 5 pin connectors are available. DigitalSpot 3000 DT offers 136 channel Control. Controllers may split these channels into fixture profiles, like DS 3000 Main, Common, Layer 1, Layer 2 and Layer 3.

## DigiCommunication



### TCP/IP Network

TCP/IP Network is the best solution for Media Content Management and Fixture Synchronization, and is the recommended typology for linking, controlling and programming multiple fixtures across one network.

### HTTP/FTP Communication

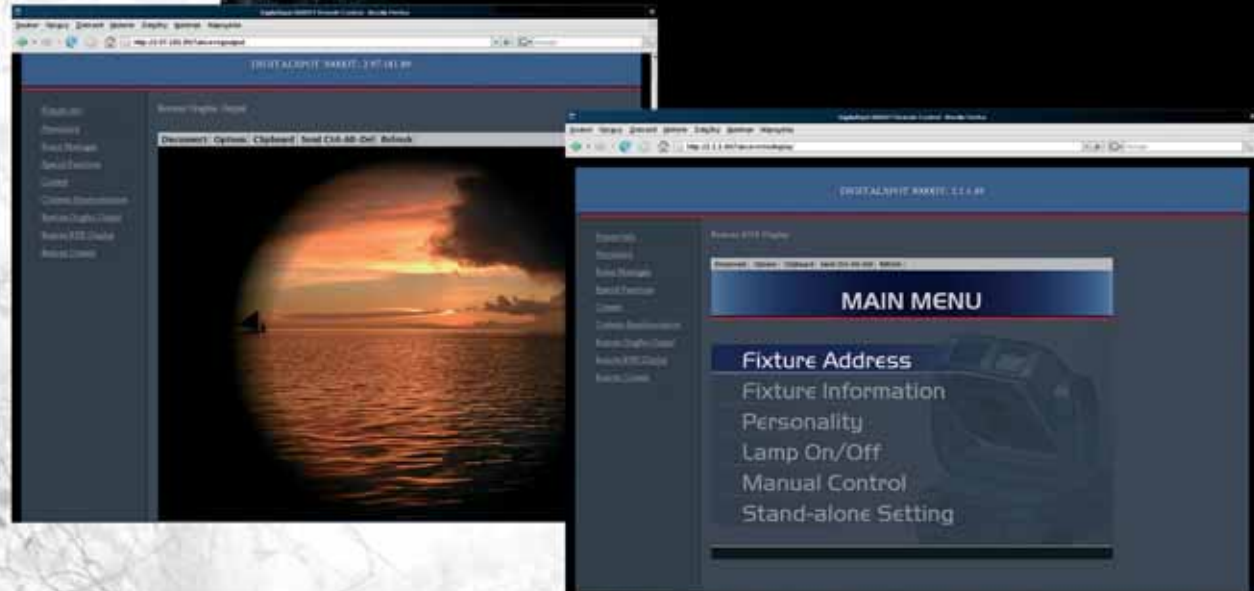
HTTP/FTP protocols are used to access the onboard web server allowing use of Media Content Management, RemoteContent Configuration and other functions.

### Artnet Communication

The ArtNet protocol is used to control all DS 3000 DT functions.

## DigiContent Management

No special software installation is required for **DigiContent Management**. Your favourite browser can be used to upload, download, preview or synchronize content of one or several fixtures at the same time via fast 1 G network. **Unique Remote Menu screen** and **Remote Live output screen** allow a convenient distant access for checkups and configuration. With fast USB2 content upload support no laptop is needed to upload new custom content. Remote Device Manager (RDM) for automatized remote configuration is also supported.

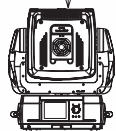




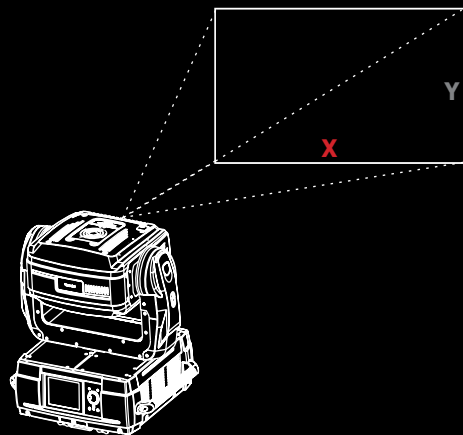


Illuminance  
(white output)

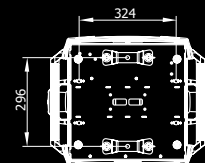
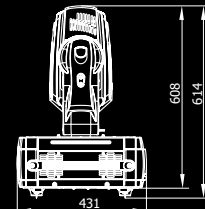
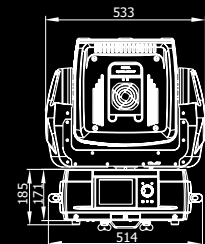
Illuminance (lx)	Distance (m)	Image Size (X, Y)
33 lx 3 fc	18m (60')	X=9m (20.5') Y=6.8m (22.2')
41 lx 3.8 fc	16m (54')	X=8m (26.3') Y=6m (19.7')
46 lx 4 fc	15m (48')	X=7.5m (24.6') Y=5.6m (18.4')
62 lx 6 fc	13m (42')	X=6.5m (21.3') Y=4.9m (16.1')
87 lx 8 fc	11m (36')	X=5.5m (18') Y=4.1m (13.5')
130 lx 12 fc	9m (30')	X=4.5m (14.8') Y=3.4m (11.2')
165 lx 15 fc	8m (26')	X=4m (31.1') Y=3m (9.8')
214 lx 20 fc	7m (23')	X=3.5m (11.5') Y=2.6m (8.5')
292 lx 27 fc	6m (20')	X=3.0m (9.8') Y=2.3m (7.5')
421 lx 39 fc	5m (16')	X=2.5m (8.2') Y=1.9m (6.2')
658 lx 61 fc	4m (13')	X=2.0m (6.6') Y=1.5m (4.9')
1169 lx 109 fc	3m (10')	X=1.5m (4.9') Y=1.1m (3.6')
2631 lx 245 fc	2m (7')	X=1m (3.3') Y=0,75m (2.5')



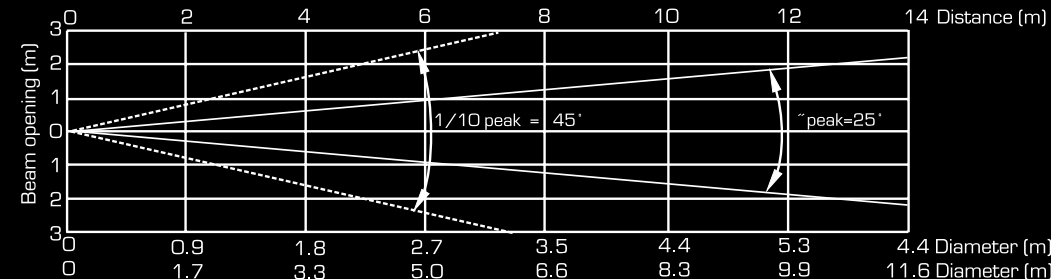
DigitalSpot 3000 DT/Image Size chart  
Throw ratio 1.82 - 2.0 :1



**Photometric Diagram  
- Digital Projector**




Standard 25° Lens-Array



Distance (m)	2	4	6	8	10	12	14	Intensity (center) Lux/Foot- candles
Red	281/26	70/7	31/3	18/2	11/1	8/0.7	6/0.5	
Green	500/47	125/12	56/5	31/3	20/2	14/1.3	10/1	
Blue	25/2.3	6.3/0.6	2.8/0.3	1.6/0.1	10/0.1	0.7/0.1	0.5/0.05	
White	638/59	159/15	71/7	40/4	26/2	18/2	13/1.2	
R+G+B+W	988/92	247/23	110/10	62/6	40/4	27/3	20/2	

**Photometric Diagram  
- RGBW LED Module**





# The Future is Digital ...

**robedigital.com**

**HQ & Factory:** ROBE lighting s. r. o. ■ Házovice 2090 ■ 756 61 Rožnov p. Radhoštěm ■ Czech Republic ■ Tel.: +420 571 751 500 ■ Fax: +420 571 626 337 ■ E-mail: robe@robe.cz  
**UK:** ROBE UK Ltd. ■ Northampton, UK ■ Tel.: 01604 741000 ■ E-mail: info@robeuk.com ■ **America:** ROBE Lighting Inc. ■ Sunrise, FL, USA ■ Tel.: +1 954 615 9100 ■ E-mail: info@robelighting.com  
**South-East Asia:** ROBE S.E.A. ■ Singapore ■ Tel.: +65 8118 6665 ■ E-mail: info@robe-sea.com

April 2009 © ROBE lighting s. r. o. All specifications subject to change without notice.