



mini

**architectural
lighting**



SPOTLIGHT

SPOTLIGHT

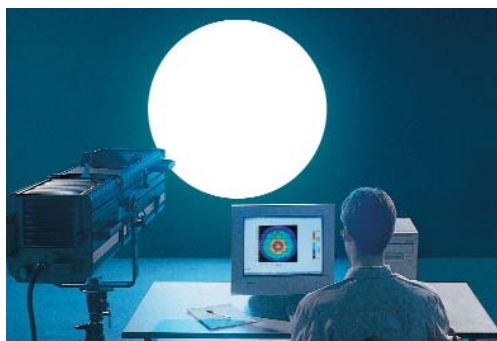
Lightening your world
for more than 30 years



Should you go to a theatre to see an opera or a play, to a rock concert or to any other major event, by appreciating the quality of the "lighting"... it may well be that you are complimenting us, perhaps without knowing!



For over 30 years, we at Spotlight have committed ourselves to the design and manufacture of lighting fixtures for the entertainment and production fields. Fresnels, PC's, profile spots, symmetric and asymmetric floodlights, beam lights, special effect projectors and followspots are all part of our product line.



Our extensive range, including Halogens fixtures from 300 to 5000 Watt, and discharge fixtures from 150 up to 4000 Watt, either manually controlled or motorised, are commonly used in theatres both in Italy and all over the world.



By utilising the experience acquired in such a demanding field, and while applying the same high standard of quality, we now produce a range of fixtures aimed at the retail market, exhibition spaces, museums, art galleries, places of worship, advertising or even in the home.



They are similar to their "bigger" brothers, only they are... **mini**.

The mini range

The Mini range of spots is ideal for use in any situation where one can appreciate the quality of light alongside the unique technological design of these products.

The main feature of the mini range of products is their highly flexible application, allowing the lighting designers to express their creativity to the full.

It is very easy to highlight details, create soft shades, give depth, produce contrasts and a chromatic atmosphere that would be impossible to obtain with more traditional types of fixtures.

It is possible to obtain beams of light, both concentrated or diffused, with sharp or soft edges either perfectly round or in many different shapes. They can also be used to project images, logos or patterns.

When using the Mini range of fixtures it is very easy to pick out detail, create soft shades, give depth, contrast and chromatic atmosphere that would be impossible to obtain with more traditional fixtures.

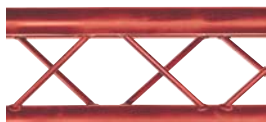
The main models include: **miniFresnel**, **miniPC**, **miniProfile** and **miniProfile zoom**.

Each model is manufactured in different versions, depending on your choice of lamp. Either halogen or discharge, giving cold or warm light, with the ability to be dimmed or giving long life and excellent value for money.

This product line also includes a full range of accessories such as barn-doors, Gobo holders, hanging brackets, mounting bases and glass or plastic filters in over 100 different colours.

We can even supply aluminium trusses for mounting, with or without mains voltage tracks.

The "mini" series is supplied finished in "optical" black as standard, which technically is the most suitable colour to guarantee the best lighting performance. However, on request, fittings can be supplied in any RAL colour, to meet your architectural or interior design needs.



miniFresnel

The **miniFresnel** produces a cone of light with an adjustable beam angle. It gives an even field of light with soft edges. By using the mini Fresnel you can concentrate the light on a single small object or obtain a wide, diffused flood of light that can cover a broad area.



Thanks to the soft edges of the light cone, the **miniFresnel** allows accent lighting of almost any object without producing sharp contrasts between the surface being lit and the surrounding area.

The mini Fresnel also accepts a 4-leaf barn door that allows the shaping and masking of the light beam. This enables the user to prevent the beam falling onto a particular area, or onto details that must not be highlighted.

The use of glass or plastic filters allows the light to be coloured to suit to the demands of the lighting designer.

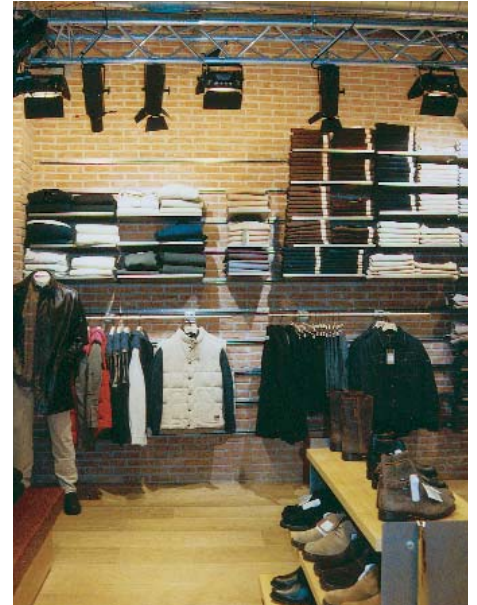


This flexibility of use, coupled with its

"compact" size, makes the mini Fresnel particularly useful for lighting

window displays, exhibitions, or wherever there is a need to illuminate objects of different sizes without the changing lantern, lens or lamp, but by simply adjusting the focus.

To select the most suitable lamp for particular applications, please see the page titled "versions and lamps".



The **miniPC** (with plano-convex lens) is similar to the mini Fresnel in the way it produces a cone of light with adjustable width.

Unlike the Fresnel, it produces a beam with more defined edges, and with the narrow beam setting, gives a greater light concentration.



As a general rule, the PC spot is recommended when the area around the object being lit needs to remain completely dark. Therefore the area being illuminated will be more defined, resulting in a higher contrast and more accentuated effect.

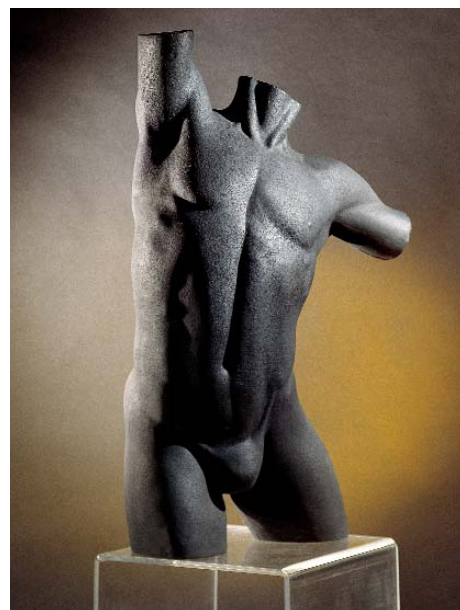
In addition to window displays and exhibitions, the PC spot is particularly recommended in museums, places of worship or in any situation when the contrast between light and shade needs to be highly defined.



The **miniPC** generally uses the same accessories

as the **miniFresnel** such as barn doors and coloured filters.

To select the most suitable lamp for particular applications, please see the page titled "versions and lamps".



The **miniProfile** projects a circular beam of light, with variable sharp or soft edges, that can be shaped by



means of the four adjustable shutters or the appropriate metal or glass frame (Gobos).

The projection beam can be modified in the "zoom" version by adjusting a pair of objective lenses or, in the "fixed focus" version, by using objective lenses of different focal length.

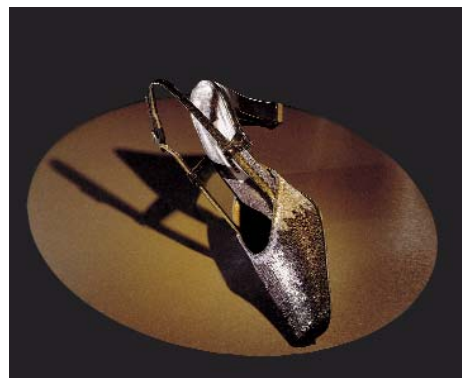
The most typical application for the **miniProfile** is for "accent" lighting. Here the object to be lit can be highlighted very sharply compared to the surrounding area. It is also suitable for more precise applications such as lighting the surface of a painting or sign, by using to the adjustable shutters.

Another application of the **miniProfile** is as an actual image projector. By using Gobos it is possible to project patterns, logos or shapes, both in black and white or colour.



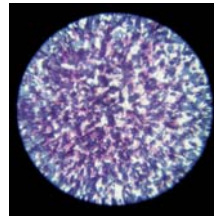
These features are ideally suited for use in many retail

environments, banks, hotels or even exhibitions. The use of light is an easy and adaptable way to advertise and communicate information to the public.



A standard library of Gobos is available, but it is also possible to produce custom-made Gobos in a short period of time.

To select the most suitable lamp for particular applications, please see the page titled "versions and lamps".



Versions and Lamps

how to choose the correct mini for you

Each of the four different models is available in seven versions

All mini spots are identified by the initials MI, followed by a further two letters, depending on the model:

- FN** Fresnel
- PC** Plano-convex
- PR** Profile
- PR ZS** Profile zoom

Finally, two more letters detail the version, as outlined below. Each version will accept a variety of lamps giving different power, colour temperature, chromatic rendering and life.

- NO** Halogen lamps 230V
- LW/CT** Halogen lamp 24 V with built-in transformer
- LW** Low voltage halogen lamps for external transformer
- MC** Mastercolour discharge lamp with built in ballast
- MC/SBA** Mastercolour discharge lamp for external ballast
- ME** Mastercolour discharge lamp with built in ballast
- ME/SBA** Mastercolour discharge lamp for external ballast

For instance, the product code **MI FN ME**, identifies a mini (**MI**) Fresnel (**FN**) using a metal-halide lamp MSD/MSR (**ME**). Similarly, the product code **MI PR ZS NO** identifies a mini (**MI**) Profile (**PR**) zoom (**ZS**) using a 230/240 V halogen lamp (**NO**).

Version NO for halogen lamps at mains voltage

For halogen lamps – 300 W with life up to 2000 hours (M38), direct supply 230 V without external transformer or power supply. Warm light, possibility to adjust intensity by means of a dimmer. These are also suitable for use in TV/photographic studios with photographic lamps at 3200°K (CP 81 – CP 82).

Lamps		* for not continuous use	
Type/Order code	M 38	CP 81	CP 82*
Power (W)	300	300	500
Lampholder	GY 9.5	GY 9.5	GY 9.5
Luminous flux (Lumen)	5200	7800	13500
Life time (hours)	2000	180	180
Colour temperature (°K)	2950	3200	3200

Version LW/CT and LW for halogen lamps – 24 V

For low voltage halogen lamps 150 W, 24 V. Lighting characteristics as for the 230 V version, but with a whiter light, optimum colour rendering, higher efficiency and low consumption.

LW/CT: features a “built-in” transformer and is supplied directly at 230 V.

LW: can be connected to an external transformer that can also be placed remotely from the luminaire.

Lamps		* for not continuous use	
Type/Order code	A1 216	A1 223*	JC 20H
Power (W)	150	250	150
Lampholder	G 6.35	G 6.35	G 6.35
Luminous flux (Lumen)	5200	10000	3000
Life time (hours)	50	50	2000
Colour temperature (°K)	3400	3400	3000

Version MC and MC/SBA for Mastercolour discharge lamps

For use with the Mastercolour 150 W lamps. High efficiency, long life (6000 hours). These are ideal in situations where prolonged usage is required, along with high light rendering and low running costs. The Mastercolour lamps are available in two different models: the first (MCD 150) gives a light tone similar to the halogen lamps and can also be installed together with existing halogen spots; the second (CDM-SA/T) gives a whiter light and high rendering. One can also use the HSD 150 lamp with a colour temperature of 7200 °K. The **MC** version features an internal power supply (ballast) and can be directly connected to a line at 230 V. The **MC/SBA** version requires an external power supply that can also be placed remotely from the luminaire.

Lamps		* provisional data	
Type/Order code	MCD 150	CDM-SA/T	HSD 150*
Power (W)	150	150	150
Lampholder	G 12	G 12	G 12
Luminous flux (Lumen)	14000	12900	12000
Life time (hours)	6000	6000	3000
Colour temperature (°K)	3000	4200	7200
CRI (Ra)	85	96	80

Version ME/SBA for MSD/MSR metal-halide lamps

For MSD/MSR metal-halide lamps – 200/250 W. The MSD lamps have a very white and brilliant light source, similar to sunlight. The lighting efficiency is almost triple that of a normal lamp and the average life is 2000 hours. These are most suited to accent lighting and also in areas with high ambient light level. The high light rendering and long life make them the “first choice” lamp for use wherever the quality of light is as important as the efficiency. For picture/TV applications, the MSR lamp at 5600 °K can be used on the same spots. The **ME** version features an internal power supply (ballast) and can be directly connected to a line at 230 V. The **ME/SBA** version requires an external power supply that can also be placed remotely from the luminaire.

Lamps			
Type/Order code	MSR 200	MSD 200	MSD 250
Power (W)	200	200	250
Lampholder	GY 9.5	GY 9.5	GY 9.5
Luminous flux (Lumen)	15000	13500	18000
Life time (hours)	200	2000	2000
Colour temperature (°K)	5600	6000	6700
CRI (Ra)	92	80	80

architectural Fresnel luminaire

Uniform projection, soft edges, compact size, for overall lighting of window displays, exhibition areas, hotels, museums and places of worship with an adjustable light beam from 7,5° to 53°.

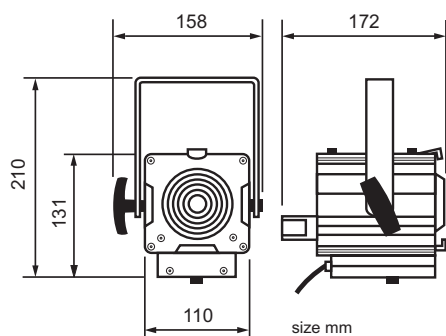
Halogen versions - 230 V (**NO**) and low voltage (**LW**).

Discharge Mastercolour (**MC**) and metal halide MSD/MSR (**ME**).

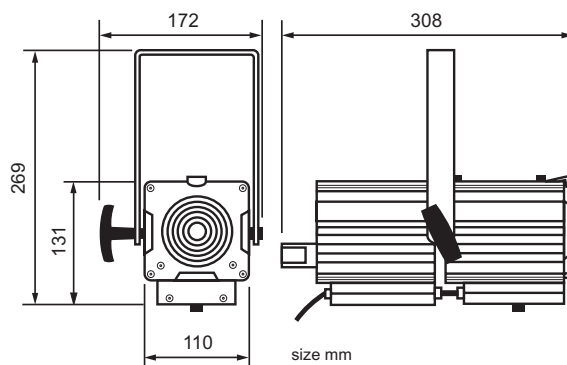


- **MI FN NO** halogen - 230 V
- **MI FN LW** halogen, low voltage for external transformer
- **MI FN MC/SBA** Mastercolour for external ballast
- **MI FN ME/SBA** MSD/MSR for external ballast

- **MI FN LW/CT** halogen 150 W, 24 V with built-in transformer
- **MI FN MC** Mastercolour - 150 W with built-in ballast
- **MI FN ME** MSD/MSR - 200/250 W with built-in ballast



MI FN NO - MI FN LW - MI FN MC/SBA - MI FN ME/SBA
Net weight Kg 1.3 - Gross weight Kg 1.5 - Box volume m³ 0.006



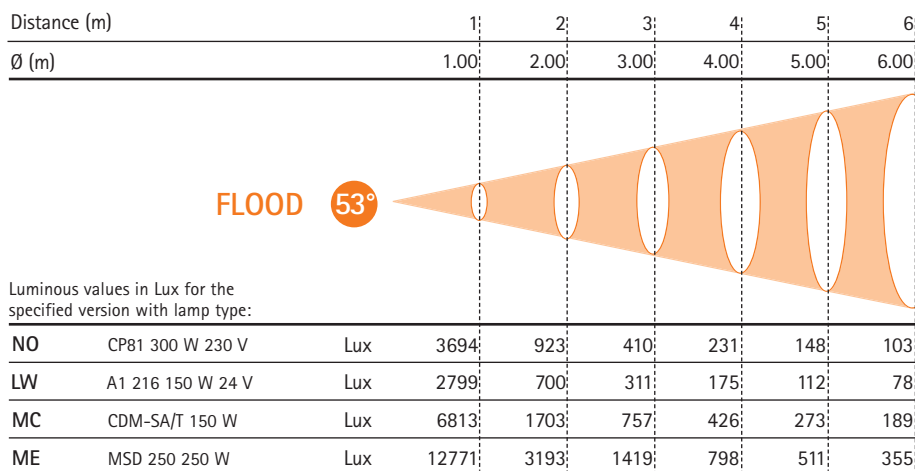
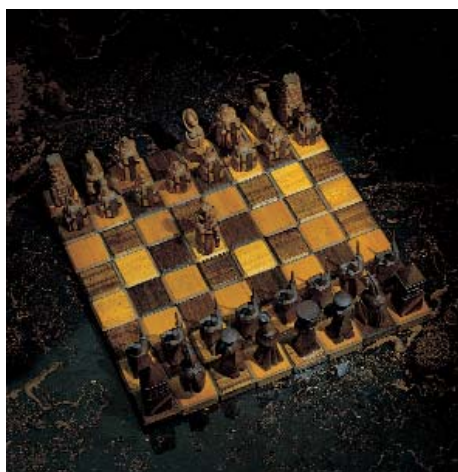
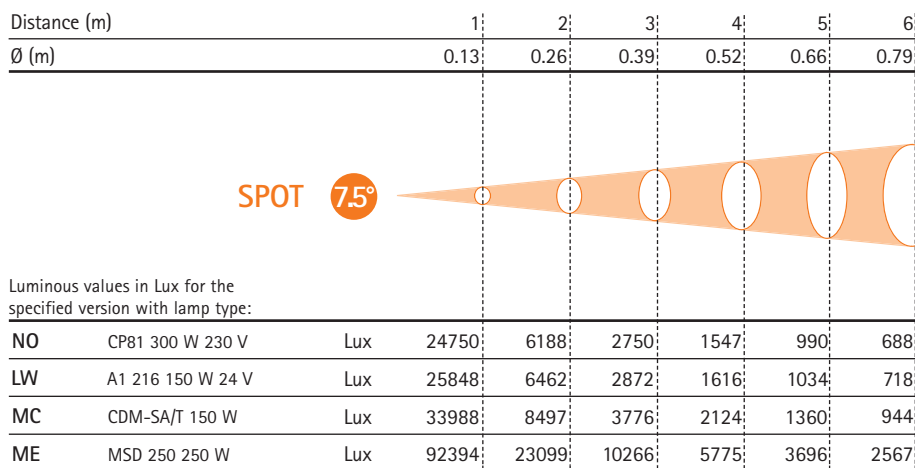
MI FN LW/CT Net weight Kg 5.3 - Gross weight Kg 5.6 - Box volume m³ 0.013
MI FN MC Net weight Kg 4.1 - Gross weight Kg 4.4 - Box volume m³ 0.013
MI FN ME Net weight Kg 5.6 - Gross weight Kg 5.9 - Box volume m³ 0.013

Technical features

- Variable beam: 7.5° - 53°
- Extruded aluminium and steel housing
- Filter-frame locking system
- Yoke with 10 mm diameter hole, reversible for use in any position
- Heat insulated knobs and handles
- Easy focus adjustment by sliding knob
- Anti scratch Epoxy resin paint (standard black)
- 1.5 m power supply cable (plug available on request)
- Standard 230 V or 24 V power supply (others on request)
- Strain relief cable clamp
- Access for lamp maintenance via removable top cover
- 80 mm diameter fresnel lens
- Spherical reflector of 99.99% polished and treated aluminium
- Compliance with CE EN 60598-2

Information for ordering accessories and different versions

Item	Code
• mini Fresnel halogen 300 W, 230 V	MI FN NO
• mini Fresnel halogen 150 W, 24 V (with built-in transformer 230V)	MI FN LW/CT
• mini Fresnel halogen, low voltage for external transformer	MI FN LW
• mini Fresnel Mastercolour 150 W, 230 V	MI FN MC
• mini Fresnel Mastercolour 150 W for external ballast	MI FN MC/SBA
• mini Fresnel MSD/MSR 200/250 W, 230 V	MI FN ME
• mini Fresnel MSD/MSR 200/250 W for external ballast	MI FN ME/SBA
Accessories	
• Colour filter frame	TC MINI
• 4-leaf barn-door	PL 4 MINI
• Motorized colour wheel	RM MINI
• Hook for mini trusses	MINI GAC
• Floor/wall mounting base	BASE-Q122-AS
• External transformer 150 W 24 V for MI FN LW	TR ES 150/24
• External electronic ballast for MI FN MC/SBA	BE ES MC 150
• External electronic ballast for MI FN ME/SBA	BE ES ME 250
Options	
• 100-120 V mains voltage	on request
• Non standard paint finish	on request
• Mounting on mains voltage tracks	on request



architectural Plano Convex luminaire

Wide adjustment of the light beam from 6.5° a 57°, with defined but not sharp edges, suitable for both general and accent lighting of window displays, exhibition areas, hotels, museums and churches.

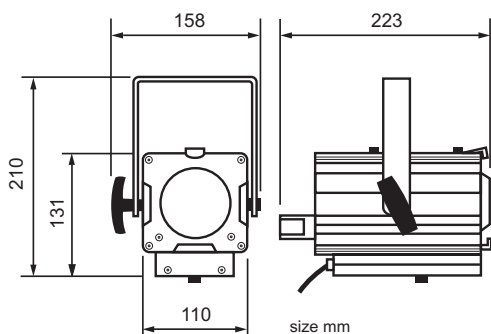
Halogen version: 230 V **(NO)** and low voltage **(LW)**.

Discharge version: Mastercolour **(MC)** and metal halide MSD/MSR **(ME)**.

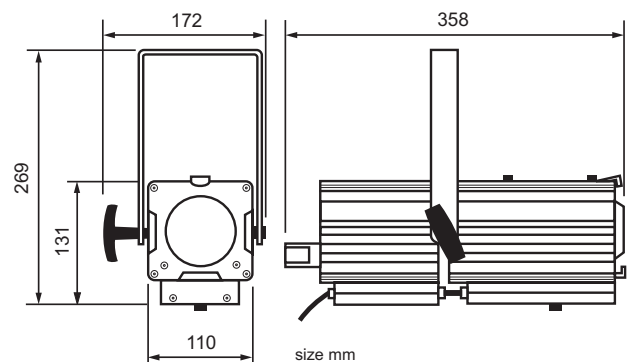


- **MI PC NO** halogen - 230 V
- **MI PC LW** halogen, low voltage, for external transformer
- **MI PC MC/SBA** Mastercolour for external ballast
- **MI PC ME/SBA** MSD/MSR for external ballast

- **MI PC LW/CT** halogen 150 W, 24 V with built-in transformer
- **MI PC MC** Mastercolour - 150 W with built-in ballast
- **MI PC ME** MSD/MSR - 200/250 W with built-in ballast



MI PC NO - MI PC LW - MI PC MC/SBA - MI PC ME/SBA
Net weight Kg 1.6 - Gross weight Kg 1.8 - Box volume m³ 0.006



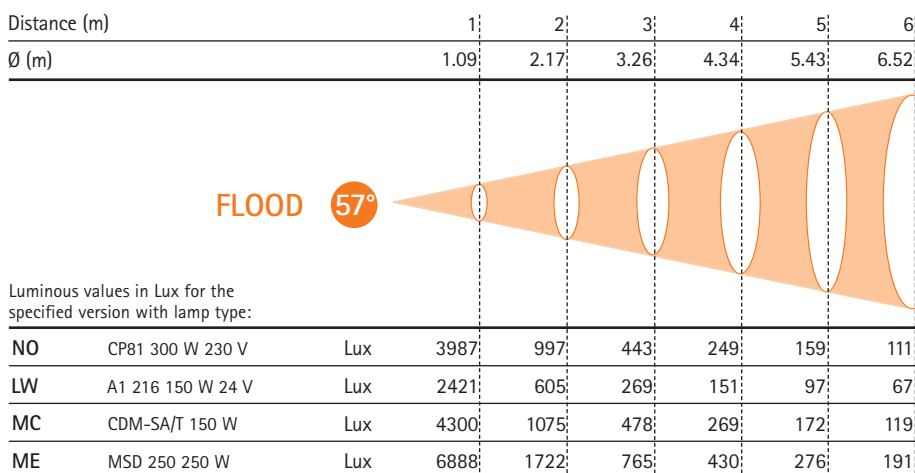
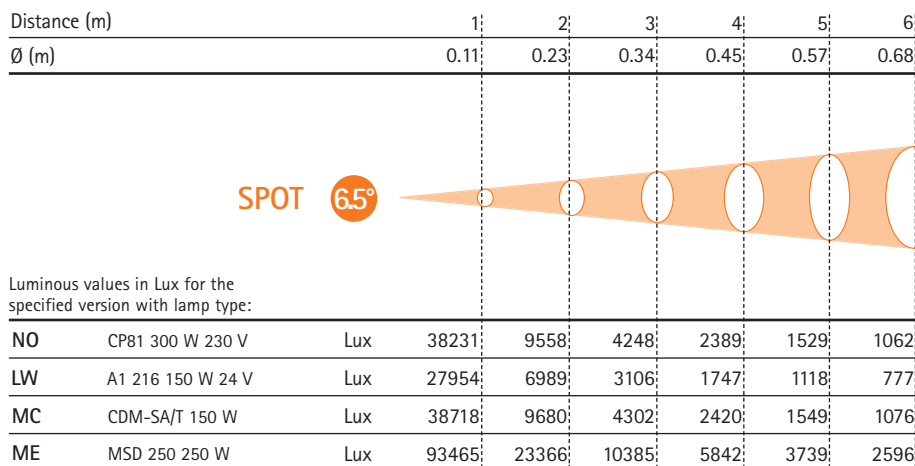
MI PC LW/CT Net weight Kg 5.6 - Gross weight Kg 6.0 - Box volume m³ 0.013
MI PC MC Net weight Kg 4.5 - Gross weight Kg 4.9 - Box volume m³ 0.013
MI PC ME Net weight Kg 5.9 - Gross weight Kg 6.3 - Box volume m³ 0.013

Technical features

- Variable beam: 6.5°–57°
- Extruded aluminium and steel housing
- Filter-frame locking system
- Yoke with 10 mm diameter hole, reversible for use in any position
- Heat insulated knobs and handles
- Easy focus adjustment by sliding knob
- Anti scratch Epoxy resin paint (standard black)
- 1.5 m power supply cable (plug available on request)
- Standard 230 V or 24 V power supply (others on request)
- Strain relief cable clamp
- Access for lamp maintenance via removable top cover
- 90 mm diameter plano-convex lens
- Spherical reflector of 99.99% polished and treated aluminium
- Compliance with CE EN 60598-2

Information for ordering accessories and different versions

Item	Codice
• miniPC halogen 300 W, 230 V	MI PC NO
• miniPC halogen 150 W, 24 V (with built-in transformer, 230 V)	MI PC LW/CT
• miniPC halogen low voltage for external transformer	MI PC LW
• miniPC Mastercolour 150 W, 230 V	MI PC MC
• miniPC Mastercolour 150 W, for external ballast	MI PC MC/SBA
• miniPC MSD/MSR 200/250 W, 230 V	MI PC ME
• miniPC MSD/MSR 200/250 W, for external ballast	MI PC ME/SBA
Accessories	
• Colour filter frame	TC MINI
• 4-leaf barn-door	PL 4 MINI
• Motorized colour wheel	RM MINI
• Hook for mini trusses	MINI GAC
• Floor/wall mounting base	BASE-Q122-AS
• External transformer 150 W 24 V for MI PC LW	TR ES 150/24
• External electronic ballast for MI PC MC/SBA	BE ES MC 150
• External electronic ballast for MI PC ME/SBA	BE ES ME 250
Options	
• 100–120 V mains voltage	on request
• Non standard paint finish	on request
• Mounting on mains voltage tracks	on request



architectural condenser optics Profile Spot

A small and compact condenser optic profile spot. Standard optics from 20° (40° and 8° optional), particularly designed for accent lighting of retail areas, art galleries, places of worship, museums and also image projection.

The four dedicated adjustable shutters can be used to shape the beam as desired.

The focus adjustment allows even adjustment of the beam to give well defined, sharp edges, or a softer edge effect.

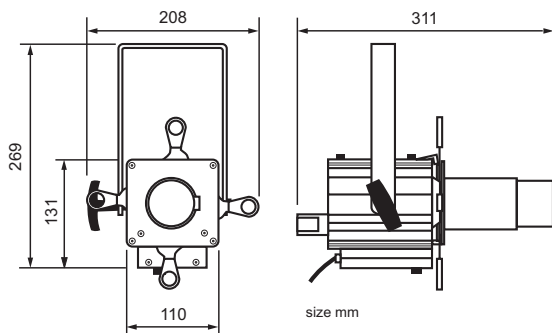
Halogen version - 230 V (**NO**) and low voltage (**LW**).

Discharge version: Mastercolour (**MC**) and metal halide MSD/MSR (**ME**).

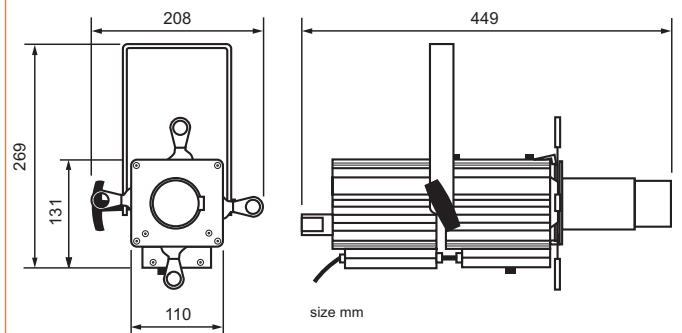


- **MI PR NO** halogen - 230 V
- **MI PR LW** halogen low voltage, for external transformer
- **MI PR MC/SBA** Mastercolour for external ballast
- **MI PR ME/SBA** MSD/MSR for external ballast

- **MI PR LW/CT** halogen 150 W, 24 V with built-in transformer
- **MI PR MC** Mastercolour - 150 W with built-in ballast
- **MI PR ME** MSD/MSR - 200/250 with built-in ballast



MI PR NO - MI PR LW - MI PR MC/SBA - MI PR ME/SBA
Net weight Kg 2.1 - Gross weight Kg 2.5 - Box volume m³ 0.013



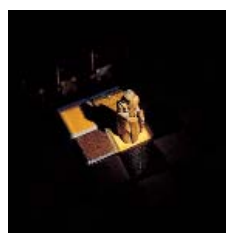
MI PR LW/CT Net weight Kg 6.0 - Gross weight Kg 6.5 - Box volume m³ 0.019
MI PR MC Net weight Kg 4.9 - Gross weight Kg 5.4 - Box volume m³ 0.019
MI PR ME Net weight Kg 6.3 - Gross weight Kg 6.8 - Box volume m³ 0.019

Technical features

- Standard objective 20° included
- Optional objectives 40° and 8°
- Condenser optic system
- M size gobo holder
- Extruded aluminium and steel housing
- 4 removable and adjustable shaping shutters
- Yoke with 10 mm diameter hole, reversible for use in any position
- Heat insulated knobs and handles
- Easy focus adjustment by sliding knob
- Anti scratch Epoxy resin paint (standard black)
- 1.5 m power supply cable (plug available on request)
- Standard 230 V or 24 V power supply (others on request)
- Strain relief cable clamp
- Access for lamp maintenance via removable top cover
- Spherical reflector of 99.99% polished and treated aluminium
- Compliance with CE EN 60598-2

Information for ordering accessories and different versions

Item	Codice
• miniProfile halogen 300 W, 230 V	MI PR NO
• miniProfile halogen 150 W, 24 V (with built-in transformer 230 V)	MI PR LW/CT
• miniProfile halogen low voltage for external transformer	MI PR LW
• miniProfile Mastercolour 150 W, 230 V	MI PR MC
• miniProfile Mastercolour 150 W for external ballast	MI PR MC/SBA
• miniProfile MSD/MSR 200/250 W, 230 V	MI PR ME
• miniProfile MSD/MSR 200/250 W for external ballast	MI PR ME/SBA
Accessories	
• Colour filter frame	TMG
• Frame holder	PTG
• M size gobo holder	PGM MINI
• Motorized colour wheel	RMG
• Hook for mini trusses	MINI GAC
• Wide objective 40°	O/MINI 40
• Narrow objective 8°	O/MINI 08
• Floor/wall mounting base	BASE-Q122-AS
• External transformer 150 W 24 V for MI PR LW	TR ES 150/24
• External electronic ballast for MI PR MC/SBA	BE ES MC 150
• External electronic ballast for MI PR ME/SBA	BE ES ME 250
Options	
• 100–120 V mains voltage	on request
• Non standard paint finish	on request
• Mounting on mains voltage tracks	on request



Distance (m)	2	4	6	8	10
Ø (m)	0.71	1.41	2.12	2.82	3.53

STANDARD 20°

Luminous values in Lux for the specified version with lamp type:

			2	4	6	8	10
NO	CP81 300 W 230 V	Lux	6120	1530	680	383	245
LW	A1 216 150 W 24 V	Lux	4851	1213	539	303	194
MC	CDM-SA/T 150 W	Lux	5767	1442	641	360	231
ME	MSD 250 250 W	Lux	21674	5419	2408	1355	867

Distance (m)	2	4	6	8	10
Ø (m)	1.46	2.91	4.37	5.82	7.28

WIDE-BEAM 40°

Luminous values in Lux for the specified version with lamp type:

			2	4	6	8	10
NO	CP81 300 W 230 V	Lux	1305	326	145	82	52
LW	A1 216 150 W 24 V	Lux	1030	258	114	64	41
MC	CDM-SA/T 150 W	Lux	1225	306	136	77	49
ME	MSD 250 250 W	Lux	4556	1139	506	285	182

Distance (m)	2	4	6	8	10
Ø (m)	0.28	0.56	0.84	1.12	1.40

NARROW BEAM 8°

Luminous values in Lux for the specified version with lamp type:

			2	4	6	8	10
NO	CP81 300 W 230 V	Lux	35075	8769	3897	2192	1403
LW	A1 216 150 W 24 V	Lux	28000	7000	3111	1750	1120
MC	CDM-SA/T 150 W	Lux	33250	8313	3694	2078	1330
ME	MSD 250 250 W	Lux	122500	30625	13611	7656	4900

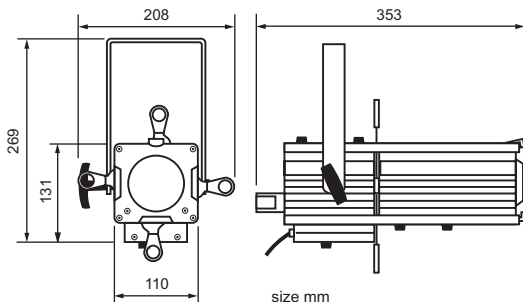
architectural condenser optics zoom Profile Spot

Small and compact, the Zoom Profile Spot uses condenser optics with a continuous adjustable beam angle between 20° to 40°. Particularly designed for accent lighting of retail areas, exhibition spaces, art galleries, museums, places of worship and also image projection. The four dedicated adjustable shutters can be used to shape the beam as desired. The focus adjustment allows even adjustment of the beam to give well defined, sharp edges, or a softer edge effect. Halogen version - 230 V (**NO**) and low voltage (**LW**). Discharge version: Mastercolour (**MC**) and metal halide MSD/MSR (**ME**).

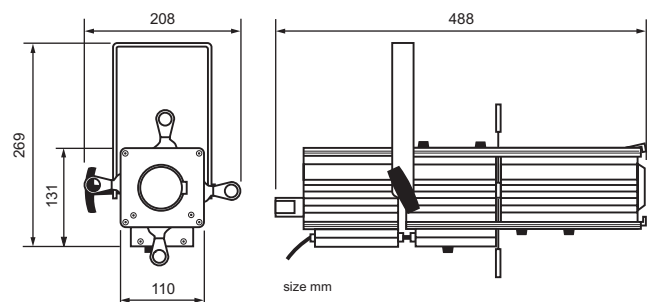


- **MI PR ZS NO** halogen 230 V
- **MI PR ZS LW** halogen, low voltage for external transformer
- **MI PR ZS MC/SBA** 150 W Mastercolour for external ballast
- **MI PR ZS ME/SBA** 200/250 W MSD/MSR for external ballast

- **MI PR ZS LW/CT** halogen 150 W, 24 V, with built-in transformer
- **MI PR ZS MC** Mastercolour 150 W with built-in ballast
- **MI PR ZS ME** MSD/MSR 200/250 W with built-in ballast



MI PR ZS NO - MI PR ZS LW - MI PR ZS MC/SBA - MI PR ZS ME/SBA
Net weight Kg 2.9 - Gross weight Kg 3.3 - Box volume m³ 0.023



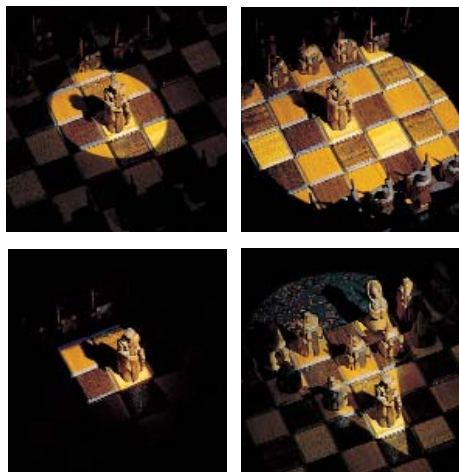
MI PR ZS LW/CT Net weight Kg 6.9 - Gross weight Kg 7.4 - Box volume m³ 0.027
MI PR ZS MC Net weight Kg 5.8 - Gross weight Kg 6.3 - Box volume m³ 0.027
MI PR ZS ME Net weight Kg 7.2 - Gross weight Kg 7.7 - Box volume m³ 0.027

Technical features

- Adjustable zoom form 20° to 40°
- Condenser optic system
- M size gobo holder
- Extruded aluminium and steel housing
- Accessory holder with safety lock
- 4 removable and adjustable shaping shutters
- Yoke with 10 mm diameter hole, reversible for use in any position
- Heat insulated knobs and handles
- Easy focus and zoom adjustment by sliding knobs
- Anti scratch Epoxy resin paint (standard black)
- 1.5 m power supply cable (plug available on request)
- Standard 230 V or 24 V power supply (others on request)
- Strain relief cable clamp
- Access for lamp maintenance via removable top cover
- Spherical reflector of 99.99% polished and treated aluminium
- Compliance with CE EN 60598-2

Information for ordering accessories and different versions

Item	Codice
• mini Profile zoom halogen 300 W, 230 V	MI PR ZS NO
• mini Profile zoom halogen 150 W, 24 V (with built-in transfor. 230 V)	MI PR ZS LW/CT
• mini Profile zoom halogen low voltage, for external transformer	MI PR ZS LW
• mini Profile zoom Mastercolour 150 W, 230 V	MI PR ZS MC
• mini Profile zoom Mastercolour 150 W, for external ballast	MI PR ZS MC/SBA
• mini Profile zoom MSD/MSR 200/250 W, 230 V	MI PR ZS ME
• mini Profile zoom MSD/MSR 200/250 W, for external ballast	MI PR ZS ME/SBA
Accessories	
• Colour filter frame	TC MINI
• M size gobo holder	PGM MIZO
• Motorized colour wheel	RM MINI
• Hook for mini trusses	MINI GAC
• Floor/wall mounting base	BASE-Q122-AS
• External transformer 150 W 24 V for MI PR ZS LW	TR ES 150/24
• External electronic ballast for MI PR ZS MC/SBA	BE ES MC 150
• External electronic ballast for MI PR ZS ME/SBA	BE ES ME 250
Options	
• 100-120 V mains voltage	on request
• Non standard paint finish	on request
• Mounting on mains voltage tracks	on request



Distance (m)	2	4	6	8	10
Ø (m)	0.71	1.41	2.12	2.82	3.53

WIDE-BEAM 20°

Luminous values in Lux for the specified version with lamp type:

			2	4	6	8	10
NO	CP81 300 W 230 V	Lux	6120	1530	680	383	245
LW	A1 216 150 W 24 V	Lux	4851	1213	539	303	194
MC	CDM-SA/T 150 W	Lux	5767	1442	641	360	231
ME	MSD 250 250 W	Lux	21674	5419	2408	1355	867

Distance (m)	2	4	6	8	10
Ø (m)	1.46	2.91	4.37	5.82	7.28

NARROW-BEAM 40°

Luminous values in Lux for the specified version with lamp type:

			2	4	6	8	10
NO	CP81 300 W 230 V	Lux	1305	326	145	82	52
LW	A1 216 150 W 24 V	Lux	1030	258	114	64	41
MC	CDM-SA/T 150 W	Lux	1225	306	136	77	49
ME	MSD 250 250 W	Lux	4556	1139	506	285	182





SPOTLIGHT

SPOTLIGHT SRL

VIA SARDEGNA, 3
20098 S. GIULIANO MILANESE (MI)
TEL. +39.02.98.83.055
FAX +39.02.98.83.056
E-MAIL: SALES@SPOTLIGHT.IT
WEB: WWW.SPOTLIGHT.IT

Spotlight reserve the right to change specification without prior notice

Your Dealer