

Geo
S1210



GEO S1210

Geo
S1210

NEXO's compact, 2-way GEO S1210 is a scalable high-output, loudspeaker module. While a narrow-Q (10°) device in single-source mode, S1210's unique Hyperboloid Reflective Wavesource (HRW) also allows coupled S1210s to radiate as coherent, wavefronts, in either horizontally or vertically arrayed systems. GEO S1210's coupled MF/HF pattern control is array-dependent, as designed by GEOsoft2 array software, and configured according to venue-specific geometry. Non-coupled MF/HF coverage configures at 80° or 120°.

The S1210 module displays exceptional MF-LF output (103dB SPL nominal sensitivity -1W @1m) from a single 12" loudspeaker and NEXO's proprietary Directivity Phase Device (DPD). Precise, inter-cabinet angle adjustments, are optimized by integral flying system hardware while NEXO's digital N242 TDcontroller maximizes S1210's MF/HF coherency.

Coherent Wave Propagation from NEXO's Advanced GEO Hyperbolic Wavesource

Advanced Constant Velocity Profile Output from 5.1° Wavefront Curvature

Integral Rigging System with Angles from 0.20° to 10°

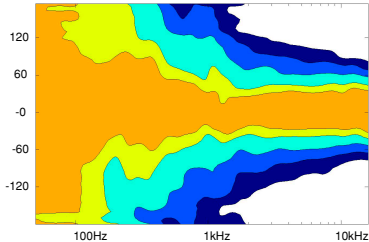
GeoSoft2 Configurable, EtherSound™ (Network)

Bottom-Line Engineering for Theatre to Arena-Sized Fixed & Mobile Applications

GEO S1210 IS RECOMMENDED FOR

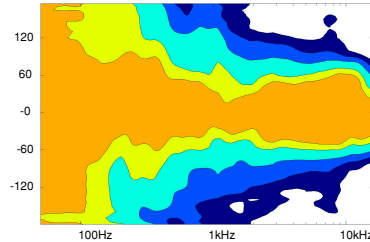
- Stadia/Arena/Auditorium Installations (Any Scale)
- High Traffic Walkways and Public Waiting Areas
- Foreground Playback for Nightclubs and Discos
- Corporate AV and Presentation Systems
- Portable Entertainment and DJ Systems
- Small to Mid-Size Tour Systems
- Houses of Worship

GEO S12 NON-COUPLING PLANE COVERAGE - 80° CONFIGURATION

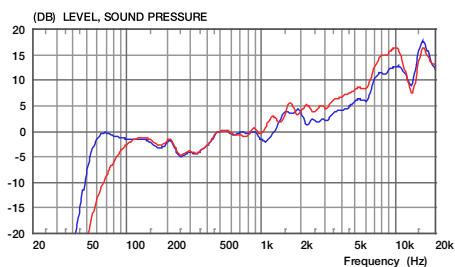


GEO S12 Off-Axis Response

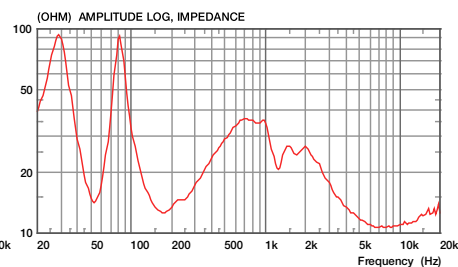
GEO S12 NON-COUPLING PLANE COVERAGE - 120° CONFIGURATION



GEO S12 Off-Axis Response



— GEO S1210 120° Wideband, N242 TDcontroller
— GEO S1210 80° Crossover, N242 TDcontroller



— GEO S1210 Impedance

NEXO
INNOVATE

www.nexo-sa.com

DATA SHEET



NEXO is one of the world's leading sound reinforcement loudspeaker manufacturers. Founded in 1979, the company is dedicated to crafting practical solutions with solid engineering. Each new design begins with a proprietary sophisticated computer simulation process that allows every parameter to be extensively modeled and simulated, leading to breakthrough cost and performance gains.

NEXO's comprehensive product line includes loudspeakers, analogue and digital control electronics and amplification; all designed to deliver consistent sound quality and long term reliability for a broad range of applications.

NEXO S.A.
ZA du Pré de la Dame Jeanne
60128 PLAILLY
France
Tel: +33 1 48 63 19 14
Fax: +33 1 48 63 24 61
e-mail: info@nexo.fr

NEXO LatAM
C.C. No 33. Suc 49
Caballito (1449)
Buenos Aires
Argentina
Tel: +54 114 432 1911
Fax: +54 114 431 1007
e-mail: info@nexo.fr

NEXO Asia
GPO Box 806
Hong Kong
SAR China
Tel: +852 9096 3472
Fax: +852 2104 3214
e-mail: info@nexo.fr

Ether
ES
Sound

NEXO

INNOVATE

www.nexo-sa.com

GEO S1210 PRODUCT FEATURES

Components	HF: 1x 3" voice coil, 1.4" throat 16 Ω driver with a 5.1° wavefront curvature. MF/LF (front-firing): 1x 12" (30cm) high excursion neodymium 16 Ω driver.
Height x Width x Depth	690 x 360 x 430mm (27.17" x 14.15" x 16.92") including array assembly system
Shape	10° Trapezoid.
Weight net	30kg (66.1lbs) including rigging assembly system.
Connectors	2x Speakon NL4.
Construction	Baltic Birch ply with structured black coating.
Front finish	Molded Dark Grey Metal Grill.
Flying points	Integral flying system. Intercabinet angle adjustments = 0.20° & 10°.

SYSTEM SPECIFICATIONS GEO S1210

Frequency response [a]	60Hz – 19kHz \pm 3dB
Usable range @-6dB [a]	55Hz – 20kHz \pm 6dB
Sensitivity	1W @ 1m [b] 103dB SPL nominal (103dB SPL wideband) Peak SPL @ 1m [b] Configuration dependent [d]
Dispersion [c]	Array dependent in the coupling plane Non-coupling plane: Configurable 80°/120°
Crossover frequency	LF- HF: 1.1kHz Passive or Active (internally configurable).
Nominal impedance	16 Ω .
Recommended amplifiers	HF: 500W to 1000W into 16 Ω

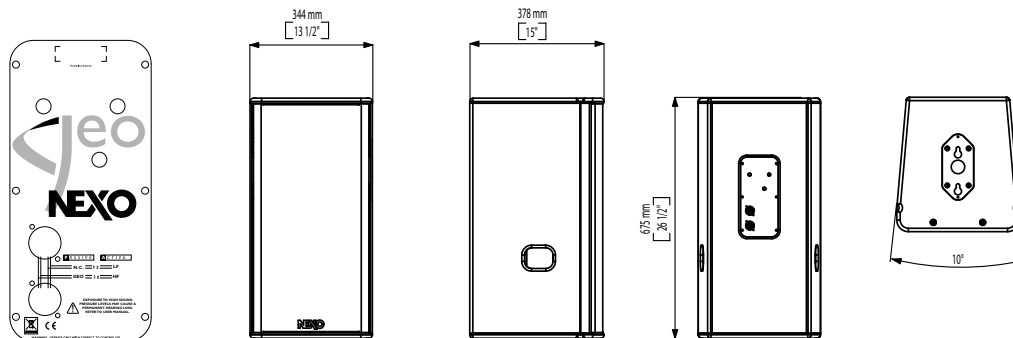
SYSTEM OPERATION

Electronic Controller	GEO S12 loudspeakers require NEXO NX242 (digital) or GEO S12 (analogue) TDcontrollers. Proprietary NX242 software provides sophisticated protection systems and advanced DSP algorithms with presets precisely matched to GEO S12 Series cabinets. Misconnected TDcontrollers cause poor sound quality and may damage GEO S12 components.
Speaker Cables	Active: 1(-) / 1(+): LF: 2(-) / 2(+): HF: Passive: 1(-) / 1(+): Not Connected: 2(-) / 2(+): Full Range.
Rigging System	Please refer to the GEO S1210 User Manual before any operation.

SHIPPING & ORDERING

Packaging	GEO S1210 are packaged individually
Shipping Weight	1x GEO S1210 = 30kg(66.1lbs), 0.15 cu m (5.3 cu ft)

As part of a policy of continual improvement, NEXO reserves the right to change specifications without notice. [a] Response curves and data: anechoic far field above 300Hz, half-space below 300Hz. [b] Sensitivity & peak SPL: will depend on spectral distribution. Measured with band limited pink noise. Refers to the specified \pm 3dB range. Data are for speaker + processor + recommended amplifier combinations. [c] Directivity curves and data: 1/3 octave smoothed frequency response, normalized to on-axis response. Data obtained by computer processing of offaxis response curves. [d] Please refer to the GEO S1230 User Manual. Usable range data: frequency response capability with TDcontroller crossover slopes removed.



LIMITED WARRANTY

NEXO loudspeakers and electronics are covered against defects in workmanship or materials for a period of two (2) years from the original date of purchase. At the option of NEXO the defective item will be repaired/replaced with no charge for materials/labour. The item is to be adequately packaged and dispatched, pre-paid, to a NEXO authorised distributor/service centre. Unauthorised repair shall void the warranty. The NEXO warranty does not cover cosmetics or finish and does not apply to any items which in NEXO's opinion have failed due to used abuse, accidents, modifications or any type of misuse. All images and text herein are the property of NEXO SA, and deemed accurate, although specifications are subject to change without notice.